



## YML01CR-AQ85150H



### PRODUCT DESCRIPTION

#### Features:

- High efficiency >90%
- Available in 1 beam pattern
- Optimized for uniform effects
- Lens material Optical grade PC
- Lens without holder

#### Typical applications:

- Stage Lighting
- Street Lights
- Decorative Light
- Down Light

### TABLE OF CONTENTS

General Information	.....	2
Usage and Maintenance	.....	2
2D Drawings	.....	3
Optical Characteristics (for 3535 led)	.....	3
Package Information	.....	4
Product Nomenclature	.....	5



## General Information (T<sub>J</sub> = 25°C)

- **Compatible Led Type:**

The YML01CR-AQ85150H single lens is optimized for 3535 led

- **Beam Angle Type:**

An optimized profile integrate different front shape enabel the general of one lens model:oval beam (85\*150deg)<sup>1</sup>

- **The Way to Assembly:**

The lens should be assembled to the PCB board or MCPCB upon LEDs which provides the most appropriate related position,so as to achieve the best uniform results.

**\* Manually installation or if necessary thermal glue are recommended.**

- **Fuction:**

YML01CR-AQ85150H provides excep tional color mixing result with the highest efficiency through careful enginnering and precision manufacturing process.

## Usage and Maintenance

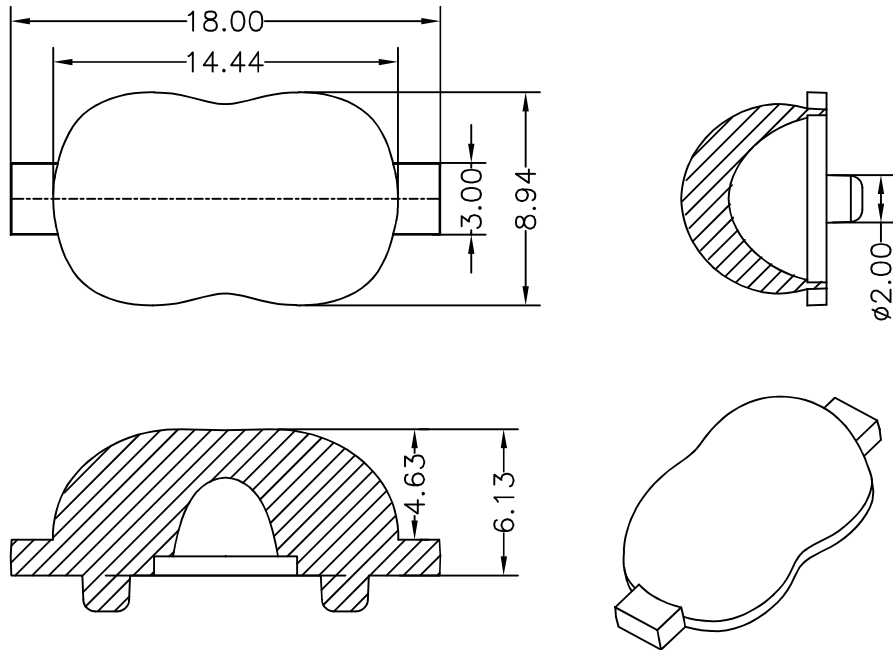
- 1.Clean lenses with mild soap and water and a soft cloth.
- 2.Don't use any commercial cleaning solvents on lenses,like alcohol.
- 3.Operating temperature -40°C ~+110°C (upper limit +120°C)
- 4.please handle or install lenses with wearing gloves,skin oils may damage lens or optical characteristic.

### Notes:

(1) Typical beam divergence will be affected by different LED manufacturers.

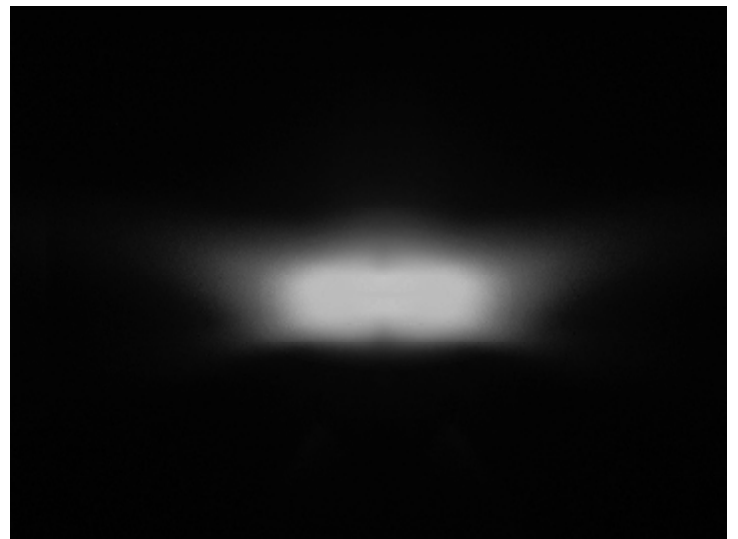
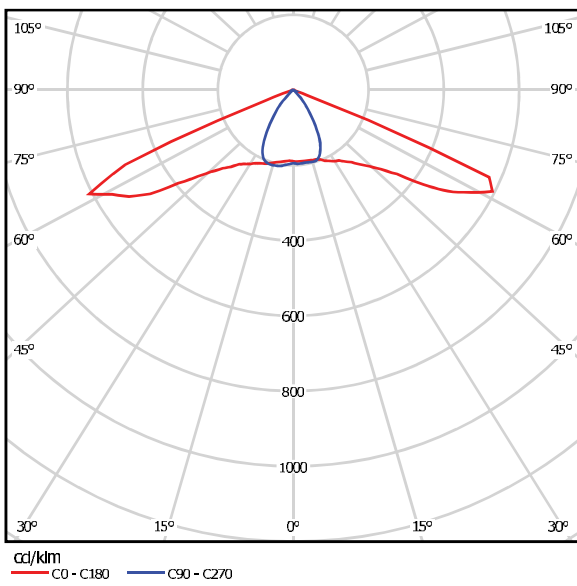


## 2D Drawings (unit:mm)



LENS

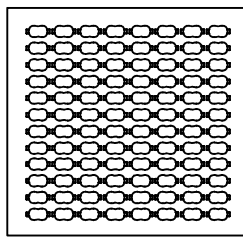
## Optical Characteristics (for 3535 LED)



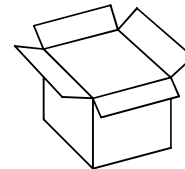
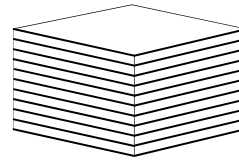


## Package Information

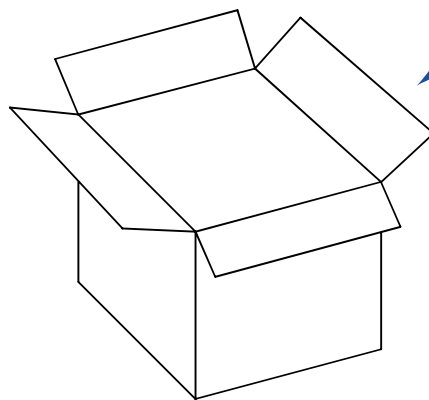
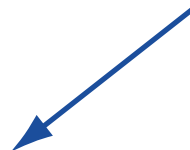
Item	Quantity	Total	Size (long*width* high)
Tray	96pcs/tray	96pcs	-
Inner box	10tray/inner box	960pcs	12.5*12.5*12.5 cm
Outer box	18 inner box/outer box	17280pcs	42.0*39.0*28.0 cm



96pcs/tray



960pcs/inner box



17280pcs /outer box



## Product Nomenclature

